

BSPP Straight Thread Port Counterboring Tools*

Parker offers counterboring/spotfacing tools for DIN 3852-1 female straight thread port connections in sizes 1/8" through 2". Counterbores are carbide tipped.

Size	Shank Dia. (in.)	Shank Length (in.)	Overall Length (in.)	Part No.
G1/8	1/2	1 1/2	2 1/2	974094-G1/8
G1/4	1/2	1 1/2	2 1/2	974094-G1/4
G3/8	3/4	1 1/2	2 1/2	974094-G3/8
G1/2	3/4	2	3	974094-G1/2
G3/4	1	2	3	974094-G3/4
G1	1	2	3 1/2	974094-G1
G1-1/4	1 1/2	2	3 1/2	974094-G1-1/4
G1-1/2	1 1/2	2	3 1/2	974094-G1-1/2



Fig. S84 — BSPP Straight Thread Port Counterboring Tool

BSPP Straight Thread Tapping Tools*

BSPP taps are available for ISO 228-1 threaded connections in sizes 1/8" through 1 1/2". All taps are bottoming type manufactured from high speed steel.

Size	Shank Dia. (in.)	Overall Length (in.)	Thread Size	Part No.
G1/8	0.438	2 1/8	1/8-28	974242-G1/8
G1/4	0.563	2 7/16	1/4-19	974242-G1/4
G3/8	0.700	2 9/16	3/8-19	974242-G3/8
G1/2	0.688	3 1/8	1/2-14	974242-G1/2
G3/4	0.906	3 1/4	3/4-14	974242-G3/4
G1	1.125	3 3/4	1-11	974242-G1
G1-1/4	1.313	4	1 1/4-11	974242-G1-1/4
G1-1/2	1.500	4 1/4	1 1/2-11	974242-G1-1/2



Fig. S85 — BSPP Straight Thread Tapping Tool

BSPT Taper Pipe Thread Tapping Tools*

BSPT taps are available for ISO 7-1 taper thread connections in sizes 1/8" through 1 1/2". All taps are bottoming type manufactured from high speed steel.

Size	Shank Dia. (in.)	Overall Length (in.)	Thread Size	Part No.
R1/8	0.438	2 1/8	1/8-28	974243-R1/8
R1/4	0.563	2 7/16	1/4-19	974243-R1/4
R3/8	0.700	2 9/16	3/8-19	974243-R3/8
R1/2	0.688	3 1/8	1/2-14	974243-R1/2
R3/4	0.906	3 1/4	3/4-14	974243-R3/4
R1	1.125	3 3/4	1-11	974243-R1
R1-1/4	1.313	4	1 1/4-11	974243-R1-1/4
R1-1/2	1.500	4 1/4	1 1/2-11	974243-R1-1/2

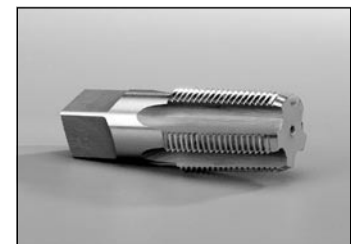


Fig. S86 — BSPT Taper Pipe Thread Tapping Tool

* See [Appendix](#) for recommended use of port tools.

Dimensions and pressures for reference only, subject to change.